

THE LONDON RESORT

The London Resort Development Consent Order

BC080001

Environmental Statement Volume 3: Figures

Figure 18.4 – Geology – Superficial deposits

Document reference: 6.3.18.4

Revision: 00

December 2020

Planning Act 2008

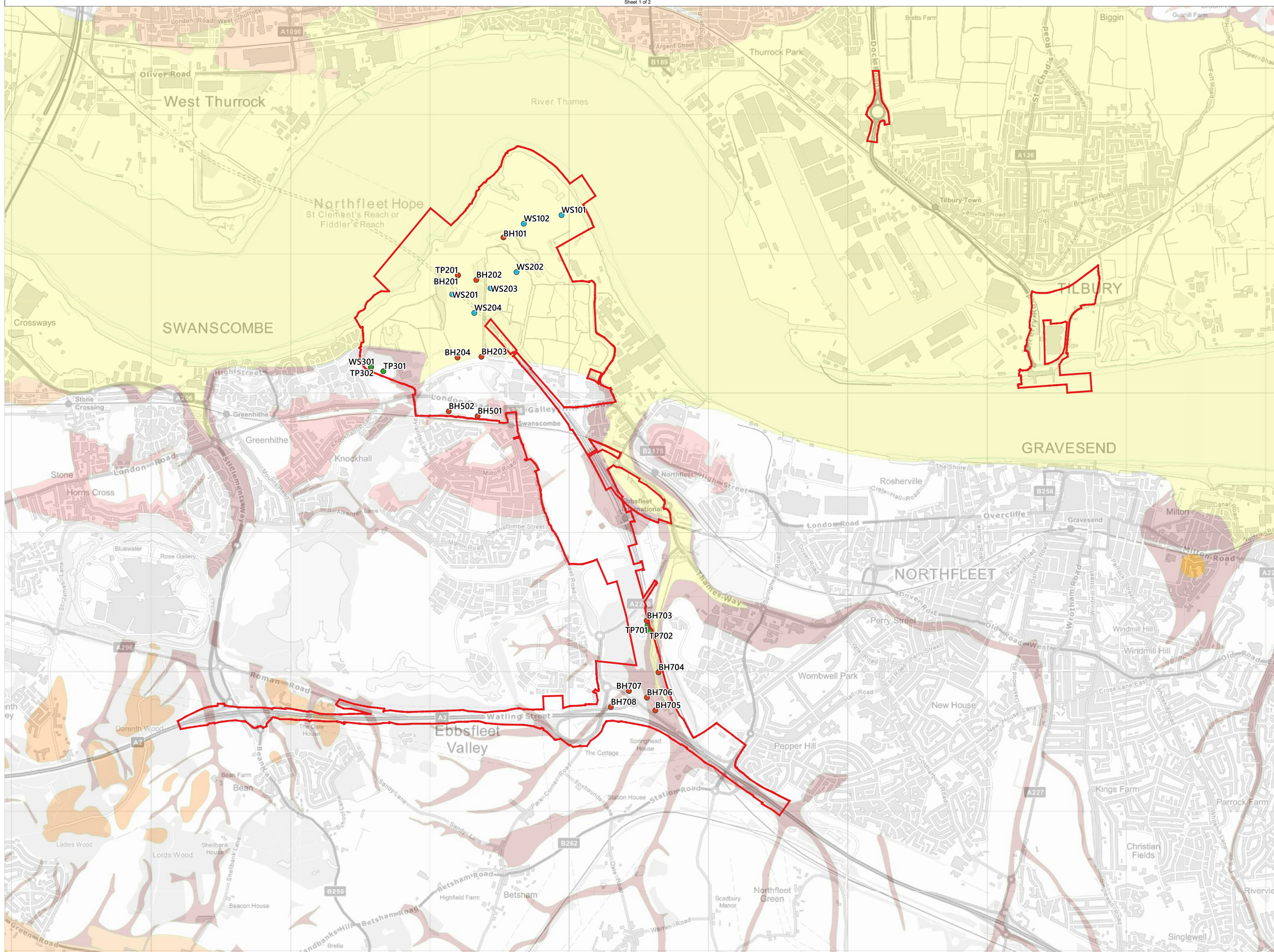
The Infrastructure Planning (Applications: Prescribed Forms and Procedure) Regulations 2009

Regulation 5(2)(a)

The Infrastructure Planning (Environmental Impact Assessment) Regulations 2017

Regulation 12(1)

[This page is intentionally left blank]



Legend

DCO Order Limits

Atkins (2015) GI

- Borehole
- Trial pit
- Window sample

ALL GROUNDWATER WELLS IN BOREHOLES AND WINDOW SAMPLES RESAMPLED DURING 2020 EXCEPT: WS201, WS203, BH703

1:50,000 Superficial Geology

- Head: silt, sand and clay with variable gravel
- Alluvium: mainly silt and clay, locally peaty
- Boyn Hill Gravel Member: gravel, sandy and clayey in part
- River Terrace Deposits (Undifferentiated)

BURO HAPPOLD

Project: The London Resort Project No. 0042936

Disclaimer: Do not scale from this drawing. Check all dimensions on site before fabrication or setting out. This document is copyright and may not be reproduced without permission of the owner.

REPRODUCED FROM ORDNANCE SURVEY MAPS, BY PERMISSION OF THE ORDNANCE SURVEY ON BEHALF OF THE CONTROLLER OF HER MAJESTY'S STATIONARY OFFICE, CROWN COPYRIGHT ORDNANCE CONTAINS BRITISH GEOLOGICAL SURVEY MATERIALS © UKRI 2020
© CROWN COPYRIGHT AND DATABASE RIGHT 2020 © LOCAL GOVERNMENT INFORMATION HOUSE LIMITED COPYRIGHT AND DATABASE RIGHTS 2020

P01	Issue for consultation	23/10/20	NS HM
Rev	Reason for Issue	Date	Drw Chk

THE LONDON RESORT DEVELOPMENT CONSENT ORDER

Geology - Superficial Deposits

Sheet 1 of 2

Application Number: **BC080001**

Drawing Reference: **LR-DG-BUR-DCP-173.0 / Figure 18.4**

Scale: **1:12,500 @ A1** Sheet: **1 of 2** Revision: **P01**